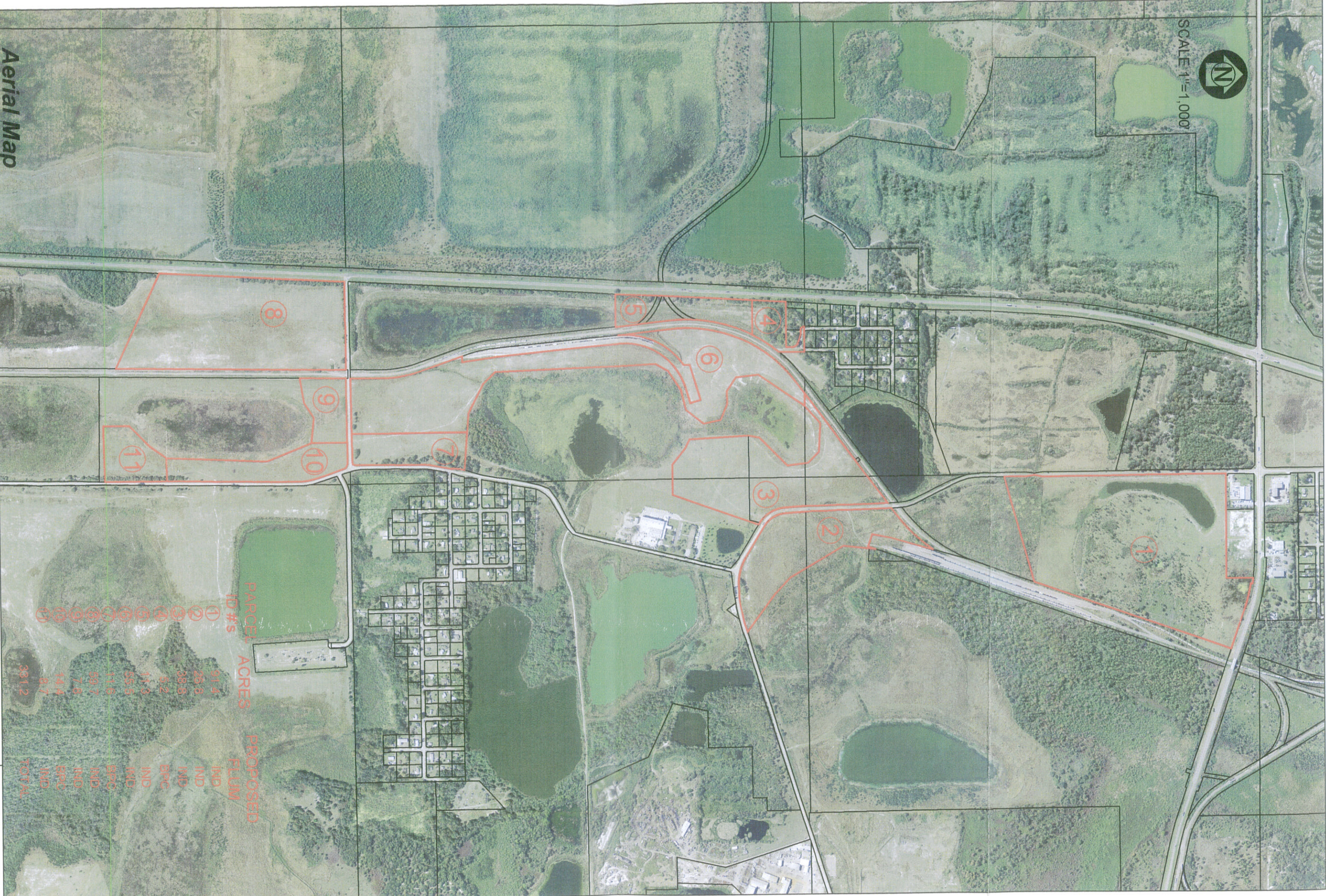




SCALE 1"=1,000'



**Aerial Map**

*The Mirms Group*

Comprehensive Plan Large Scale Map Amendment  
Unincorporated Polk County Florida

**Mike Cotter, P.E., Inc.**  
8808 Teacher Lane  
Zephyrhills, Florida 33813  
Phone 863-370-1467 Fax 813-355-3959

Michael C. Cotter, PE #43291

PARCEL ID #'S	ACRES	PROPOSED PLUM
1	91.4	IND
2	26.8	IND
3	38.5	IND
4	5.2	SPC
5	11.9	IND
6	55.5	M/D
7	11.8	SPC
8	59.7	M/D
9	7.8	M/D
10	14.4	SPC
11	9.7	IND
381.2		TOT AL